

## Experimental Study of the Energy Balance of Unheated Greenhouse under Hot and Arid Climates: Study for the Night Period of Winter Season

<sup>a</sup> Mesmoudi, Kamel , <sup>b</sup> Soudani, Azzedine , <sup>a</sup> Zitouni, Bariza  
<sup>c</sup> Bournet, P.E. & <sup>d</sup> Serir, Lazhar

<sup>a</sup> Department of Agronomy, Faculty of Science, University of Batna, Batna. Algeria.

<sup>b</sup> Department of Physics, Faculty of Science, University of Batna, Batna. Algeria.

<sup>c</sup> Environmental Physics and Horticulture Research Unit, Agrocampus Ouest INHP, 2, Rue Le Nôtre 49045 Angers, France

<sup>d</sup> Renewable Energy Center of Ghardaïa, Ghardaïa. Algeria

Email: [mesmoudi.kamel@univ-batna.dz](mailto:mesmoudi.kamel@univ-batna.dz)

### ABSTRACT

*In regions with warm and hot climates as is the case of several countries of the Mediterranean basin, it is interesting to study the energy balance inside a greenhouse and to quantify the heat transfers along the building components (roof, walls and ground) in winter and during night time. The present experimental work was conducted in an unheated glasshouse without crop in the region of Batna, Algeria. Three types of measurements were done from January to March: the first one is at a cloudy night; the second one at a windy night and the third one at a cloudless night. The results indicate that the greenhouse ground is considered as a significant heat source which can compensate the energy losses through the walls especially during a night preceded by a significant diurnal insulation. In addition, the convection heat transfer coefficients inside and outside the greenhouse were estimated and analysed. A good agreement with the models reported in literature was found.*

**KEYWORDS:** Greenhouse, energy balance, convective, heat transfer coefficients.

### INTRODUCTION

The microclimate parameters inside a greenhouse, not only influence the growth of vegetation, but can also be critical factors affecting the spread of epidemics inside the crops. The energy balance of greenhouse has been described for more than forty years, in the pioneering works of (Businger, 1963) and (Walker, 1965). Later on, several models of the energy balance have been developed in order to understand the relationship between the outdoor and indoor microclimates and to characterize the mean behaviour of particular elements in the greenhouse, such as the inside air, the surrounding environment, and the shape and the greenhouse cover (Kimbali, 1973; Bot, 1983; Nijskens *et al.*, 1984; Jolliet, 1991 and Zhang *et al.*, 1997). Other studies have analysed the thermal energy of greenhouses equipped with a heating system (de Halleux, 1989), or investigated the processes of heat exchange (Kittas, 1986, Papadakis *et al.*, 1992). Although most of these works produced reasonable estimations of heat transfers, very few models have been used in practice for predicting greenhouse microclimate over long continuous periods, and under semi-arid conditions. Recently, (Singh *et al.*, 2005) developed an algebraic model and implemented a data-processing code, in order to simulate the micro climate of a greenhouse located in a hot and dry climate zone. (Impron *et al.*, 2007) established a dynamic model to be used as a

design tool of greenhouses in tropical lowlands. The characterization of the energy balance of the greenhouses for each bioclimatic zone of the world becomes fundamental in order to evaluate the greenhouse feasibility, to improve its microclimate control (management and profitability), and to assess the effects of the latitude on the growth. During the last two decades, the use of greenhouses in Algeria has gradually emigrated from the littoral zones towards the South of the country which is characterized by high winter insulation, varying from 10.5 to 14 hours per day between October and March. The region of Batna is characterized by cold and dry winters, with average minimal temperatures between  $-5^{\circ}\text{C}$  and  $2^{\circ}\text{C}$  during the night periods of January and March, and with low levels of moisture. These two factors may negatively affect the quality and the quantity of crops. To our knowledge, very few studies on the energy balance of greenhouses set up in the arid and semi arid area of the Southern Mediterranean basin have been carried out (Mesmoudi *et al.*, 2008), and little attention was paid to the analysis of the heating efficiency of these greenhouses. It is therefore relevant to investigate the night energy balance of a greenhouse under arid or semi-arid conditions during the winter season.

Within this context, the objectives of the present study were: i) to quantify the night heat transfers of a greenhouse, by performing a comprehensive analysis of the energy balance components of the shelter; ii) to estimate the energy losses of the greenhouse; iii) to evaluate the energy effectiveness of the ground; and iv) to investigate the feasibility of a greenhouse deprived of any heating system under these specific climatic conditions. To reach these objectives, an experimental greenhouse was equipped with a set of probes in order to measure the different components of the energy balance. From the experimental results, the magnitude of the energy flux and heat transfer coefficients were obtained, and compared with the results from the literature.

## **MATERIALS AND METHODS**

### **Site, Greenhouse Description, and Measurements**

The experimentation was carried out in a closed glasshouse of  $32\text{ m}^2$  surface area, without any crop and deprived of any artificial heating system. The experimental device was located at the department of agronomy of the University of Batna ( $6^{\circ}11'$  East,  $35^{\circ}33'$  North). The greenhouse was a standard 4 m wide Venlo type glasshouse (3.60 m high under ridge and 3.20 m high under gutter), with a global volume of  $92.75\text{ m}^3$  (Table 1). It was orientated East–West. The greenhouse was built with metallic frames and was covered with a horticultural glass of 4 mm thickness.

The average spectral properties of the glass, provided by the manufacturer, are reported in Table 2. The analysis of the ground of the greenhouse to a depth of 50cm reveals the following results: 30.62% of clay, 25.60 % of fine silt, 17.13% of coarse silt, 15.41% of fine sand, and 11.24% of coarse sand. The ground density and thermal conductivity were measured for sample locally collected, whereas its spectral properties (Table 2) were inferred from the study carried out by Capderou (Capderou, 1985). For the three periods of measurement, the ground of the greenhouse was bare; however evaporation was present, which was confirmed by the analysis of the energy balance on the surface of the ground and on the interior air. The main source of the water vapour was the quantity of water contained in the ground (21.57%).

Figure 1 provides a schematic view of the facility and shows the different probes used to measure the temperature and the relative humidity. All the measurement points are distributed along a cross-section at the centre of the greenhouse in the same vertical plane,

and at different heights. The temperature and relative humidity of the air (interior air and surrounding air) were recorded by means of a data logger (OAKTON Logger Plus) which is a system of remote measurements. This system consists of six thermo hygrometers, six transmitters and a recording box. The temperatures of the solid surfaces (surface ground, underground and walls surface of the cover) were measured every 2s with thermocouples, and then averaged over 30 min periods. All the above mentioned measurements were collected on a data logger system (Campbell Scientific Micro logger, CR3000). The outside climatic conditions were measured by a weather station. The energy balances of the components of the greenhouse have been established for three measurement series; The first was from 24 to 25 January 2007 and is representative of the cloudy night; the second was from 20 to 21 February 2007 and is representative of the windy night; the third was from 17 to 18 Mars 2007 and is representative of the cloudless night. The climatic conditions observed during the three periods of experimentation are reported in Table 3.

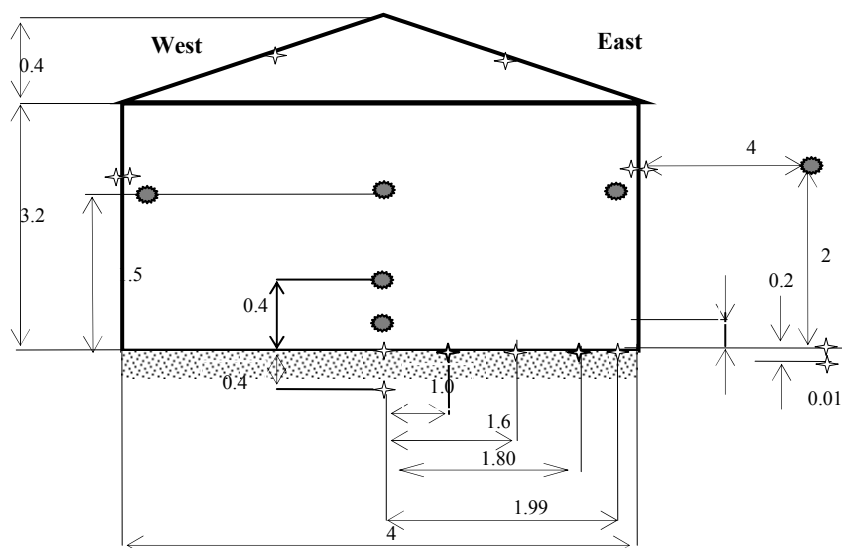


Figure 1. Experimental setup view (lengths in meter):  
Humidity and temperature sensors: ● , Thermocouples : ✕

Table 1. Geometrical characteristics of the greenhouse components

Nome of constant	Symbol	Value	Remark
Length of the greenhouse	$L$	8 m	
Width of the greenhouse	$l$	4 m	
Volume of the greenhouse	$V$	92.75 m <sup>3</sup>	calculated
Surface of the ground sheltered by the greenhouse	$S_g$	32 m <sup>2</sup>	calculated
Surface of the cover of the greenhouse	$S_c$	69.25 m <sup>2</sup>	calculated
Total surfaces of leakage in the greenhouse	$S_f$	0.22 m <sup>2</sup>	calculated
Thickness of the layer of the sheltered ground	$z_g$	0.4 m	
Thickness of the cover of the greenhouse	$z_c$	0.05 m	
Shape factor for the interior wall to the ground of the greenhouse	$f_{cig}$	0.46	calculated
Shape factor for the outside wall of the cover to the sky	$f_{csky}$	0.73	calculated
Shape factor for outside wall to the external ground	$f_{cege}$	0.27	calculated

Table 2. Thermal and spectral characteristics of the greenhouse components

	$P$ $kgm^{-3}$	$\lambda$ $W m^{-1}K^{-1}$	$C$ $J kg^{-1}K^{-1}$	Under visible Wave length	Under long infra-red wave length	Reference
Ground	$1625.91^*$	$2.541^*$	$1491.62^*$	$r_g=0.25$ $\alpha_g=0.75$ $\tau_g=0$	$\epsilon_g=0.9$ $r_{gt}=0.2$ $\alpha_{gt}=0.8$	Capderou (1985)
Air	$101354/(287.05T_{ai})$	$(2.510^2 T_{ai}^{1/2})/(T_{ai}+19444)$	1004	-	-	Molina-Aiz et al. (2004)
Cover glass	840	0.76	2700	$r_c=0.1$ $\alpha_c=0.15$ $\tau_c=0.75$	$\epsilon_{ct}=0.93$ $r_{ct}=0.1$ $\alpha_{ct}=0.9$ $\tau_{ct}=0.0$	Manufacturer's data

**Greenhouse Energy Balance**

The energy balance analysis was carried out only during periods of stable climatic conditions when the heat flux and the state variables were relatively stationary. Over a 30 min period, the variations of the radiation and the conduction of heat fluxes were lower than  $\pm 2.02 W m^{-2}$ , and the variations of the recorded temperatures were lower than  $\pm 0.42 K$ . Under these conditions which could be considered as stationary, the energy balance of each component was calculated. By convention, the direction of each term of the equations described below is negative away from the surface, and positive towards the surface of the component. Figure 2 depicts the different heat fluxes exchanged between the elements of the greenhouse and with the outside environment.

The energy balance for each component of the greenhouse may then be established. In this section, all heat fluxes are expressed per m2 of ground surface  $S_g$  in  $W m^{-2}$ .

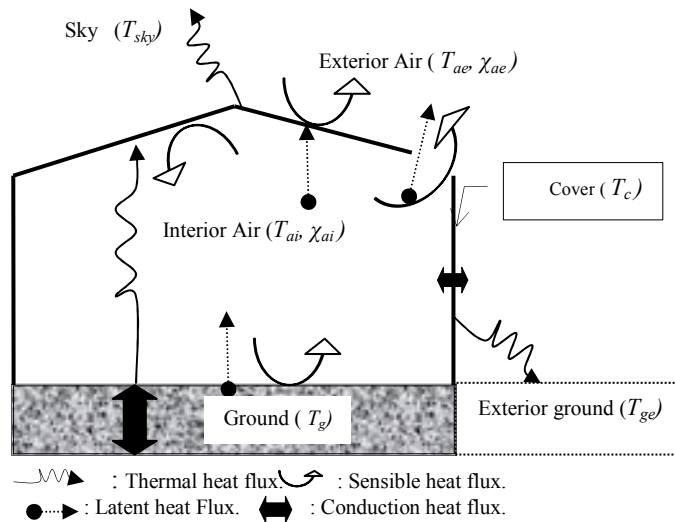


Figure 2: Greenhouse Physics model and energy balance

**Soil Surface Energy balance**

The surface ground energy balance of the greenhouse under steady state conditions is described by the equation

$$Q_g^{inf} + Q_{gai}^{cov} + Q_{gai}^{lat} + Q_g^{cod} = 0 \tag{1}$$

Where  $Q_g^{inf}$  is the net radiation heat flux emanating from the ground surface of the greenhouse.  $Q_{gai}^{lat}$  is the latent heat flux associated with the evaporation of the ground surface.

It is deduced from the latent heat balance on the interior air (Eq. 4). The conduction heat flux between two layers corresponding to the surface of the bare soil and of the layer located at 40cm above the surface inside the ground  $Q_g^{cod}$ . The convective heat flux exchanged between the ground surface and the interior air  $Q_{gai}^{cov}$  is given directly from a residual calculation of Eq. 1 and from the coefficient of heat transfer by convection between the ground surface and the interior air  $h_{gai}$  ( $W m^{-2} K^{-1}$ ) inferred from Eq. 2:

$$h_{gai} = \frac{Q_{gai}^{cov}}{(T_{ai} - T_g)} \quad (2)$$

Where  $T_{ai}$  is the temperature of the interior air and  $T_g$  is the temperature of the ground surface in K.

### Interior Air Energy balance

Assuming that the infra-red radiations are not absorbed by the air, only the convective and latent exchanges are considered, two interdependent equations may then be written: the sensible and the mass energy balance of the greenhouse air volume, which may be expressed as:

$$Q_{aici}^{cov} + Q_{gai}^{cov} + Q_{aiae}^{cov} = 0 \quad (3)$$

$$Q_{gai}^{lat} + Q_{aiae}^{lat} + Q_{aici}^{lat} = 0 \quad (4)$$

where  $Q_{aici}^{cov}$  is the convective heat flux exchanged between the interior air and the interior wall surface of the cover, and  $Q_{aiae}^{cov}$  is the sensible heat flux due to the leakage losses through the structure of the greenhouse.  $Q_{aiae}^{lat}$  is the leakage losses of enthalpy, and  $Q_{aici}^{lat}$  is the latent heat flux of condensation on the interior wall of the cover. The sensible and latent heat fluxes  $Q_{aiae}^{cov}$  and  $Q_{aiae}^{lat}$  due to the leakage losses, are calculated using the temperatures of the relative humidity measured in the air (interior and exterior) according to the formula provided by Fernandez and Bailey (1992) (Eq. 5 and 6):

$$Q_{aiae}^{cov} = \frac{\rho_a \Re V C_a}{3600 S_g} [T_{ai} - T_{ae}] \quad (5)$$

$$Q_{aiae}^{lat} = \frac{\rho_a \Re V L_v}{3600 S_g} [\chi_{ai} - \chi_{ae}] \quad (6)$$

$$Q_{aici}^{lat} = \phi_{vap} L_v \quad (7)$$

Where  $\rho_a$  is the density of the air ( $kg m^{-3}$ ),  $V$ , the volume of the greenhouse ( $m^3$ ),  $C_a$  is the mean specific heat of the air and is equal to  $1004 J kg^{-1} K^{-1}$ ,  $T_{ae}$ , the temperature of the surrounding air (K),  $\chi_{ai}$ , the absolute humidity of the air inside the greenhouse, and  $\chi_{ae}$ , the absolute humidity of the air outside the greenhouse ( $g_{water} kg_{air}^{-1}$ ).  $L_v$  is the latent heat of vaporization of water ( $J kg^{-1}$ ). The renewal rate of the air  $\Re$  ( $m^3 s^{-1}$ ) is given as a function of the wind speed  $U_e$  ( $m s^{-1}$ ) and the temperature gradient ( $\Delta T_{aiae} = T_{ai} - T_{ae}$ ). The latent heat flux of condensation on the interior wall of the cover  $Q_{aici}^{lat}$  is calculated from the condensed water

vapour flux  $\phi_{vap}$  using Eq. 7. The sensible heat flux exchanged between the interior air and the interior wall of the cover  $Q_{aici}^{cov}$  is then deducted from Eq. 3. The coefficient of heat transfer by convection  $h_{aici}$  between the interior air and the interior wall is given according to:

$$h_{aici} = \frac{S_g Q_{aici}^{cov}}{S_c (T_{ai} - T_{ci})} \quad (8)$$

Where  $T_{ci}$  is the temperature of the interior wall of the cover, and  $S_g, S_c$  are respectively the surfaces of the ground and cover ( $m^2$ ).

### Energy Balance of the Cover

Because of the absence of condensation on the external wall of the glazing during the three periods of measurements, this phenomenon was neglected in the calculation of the energy balance of the outside wall of the cover (Eq. 10). Thus the heat balance on both the internal and the external surfaces of the walls, under steady state conditions, are governed by Eq. 9 and 10 respectively:

$$Q_{aici}^{cov} + Q_{aici}^{lat} + Q_c^{cod} + Q_{ci}^{inf} = 0 \quad (9)$$

$$Q_{ceae}^{cov} + Q_c^{cod} + Q_{ce}^{inf} = 0 \quad (10)$$

These two equations include new parameters: the flux of conduction through the cover  $Q_c^{cod}$ , and the infra-red radiation heat fluxes on both faces of the cover, namely,  $Q_{ci}^{inf}$  and  $Q_{ce}^{inf}$ . These three heat fluxes are calculated respectively by Eq. A2, A14 and A15 provided in the Appendix, using the measured temperatures, the thermo physical characteristics of the components, and the geometrical characteristics of the greenhouse (Table 1). The convective heat flux exchanged between the outside wall of the cover and the surrounding air  $Q_{ceae}^{cov}$  is then inferred directly from Eq. 10. The coefficient of exchange by convection  $h_{ceae}$  between the exterior wall surface of the cover and the surrounding air is calculated using Eq. 11 below, where  $T_{ci}$  is the temperature of the exterior wall of the cover.

$$h_{ceae} = \frac{S_g Q_{ceae}^{cov}}{S_c (T_{ce} - T_{ae})} \quad (11)$$

## ANALYSIS AND DISCUSSION OF THE RESULTS

All reported results are based on data collected in the greenhouse (with reference cover and geometry) during one growing season, from October 2007 to March 2008 with indoor climate as summarised in tables 3, 4, and 5.

### Soil Surface Energy Balance

The average values of the components of the energy balance of the ground surface described by Eq. 1 are represented in Table 3 for the three nights of experimentation.

### Conduction inside the greenhouse ground

During the three periods, the conduction heat flux through the surface ground  $Q_g^{cod}$  was ascending (positive), so the sand layer was transferring heat upwards, and the heat accumulated in the soil was released to the greenhouse during night time. This process can

compensate the radiation losses of the surface ground, which represented the principal heat losses of this component (Table 3).

Table 3. Energy balance components values of the greenhouse ground surface

Periods	$Q_g^{cod}$ (W m <sup>-2</sup> )	$Q_{gai}^{cov}$ (W m <sup>-2</sup> )	$Q_{gai}^{lat}$ (W m <sup>-2</sup> )	$Q_g^{inf}$ (W m <sup>-2</sup> )	$T_g$ (K)	$T_{ai}$ (K)	$\Delta T_{gai}$ (K)	$h_{gai}$ (W m <sup>-2</sup> K <sup>-1</sup> )
Cloudy night Jan 25, 2007	44.03 (±2.6)	-6.85 (±1.50)	-9.09 (±0.52)	-28.09 (±2.85)	283.98 (±0.85)	283.09 (±1.0)	0.89 (±0.21)	07.7 (±2.13)
Windy night Feb 21, 2007	42.23 (±4.13)	-8.37 (±1.85)	-9.26 (±0.47)	-24.62 (±3.21)	281.05 (±0.70)	280.07 (±1.32)	0.98 (±0.18)	08.54 (±1.86)
Cloudless night Mar 18, 2007	38.70 (±3.2)	-6.29 (±1.23)	-9.88 (±0.61)	-22.13 (±2.22)	279.39 (±0.65)	278.35 (±1.0)	1.04 (±0.07)	6.55 (±1.56)

During the first night for instance, with a mean positive flux of 44.03 W m<sup>-2</sup>,  $Q_g^{cod}$  was supplying enough energy to compensate the radiative losses, which represented the main loss component 28.09 (W m<sup>-2</sup>).

The heat flux  $Q_{gai}^{cov}$  and  $Q_{gai}^{lat}$  were small at that time (about 8 W m<sup>-2</sup>) and of opposite sign. In most studies of the energy balance of greenhouses, the values of  $Q_g^{cod}$  were assumed to be relatively small and thus neglected. According to (Roy et al., 2002), the contribution of the heat conduction flux of the soil may be considered as negligible in cases where the ground of the greenhouse is largely shaded by vegetation, or in greenhouses equipped with a heating system. On the contrary, in unheated greenhouse or those with low leaf area crops, the soil energy storage and release over 24 hours periods are far from being negligible. Considering a moderately heated greenhouse, (Baille *et al.*, 2006) have shown that the contribution of the soil represented approximately 40 % of the heating input, compared to only 15% in the case of a high input level of heat. In our case - an unheated and closed greenhouse with bare soil - the average values of the conduction flux for the three periods correspond to an energy release from the ground of 44.03 W m<sup>-2</sup>, 42.23 W m<sup>-2</sup>, and 38.7 W m<sup>-2</sup> respectively, which is equivalent to an energy release from the soil during a 12-h night of: 1.63 MJ m<sup>-2</sup>, 1.56 MJ m<sup>-2</sup> and 1.47 MJ m<sup>-2</sup>. These results are twice the energy release (daily energy stored in the soil and released to the greenhouse interior air during the night time) found by (Baille *et al.*, 1985) and by (Baille, 1999) for greenhouses with tomato crops under temperate climatic conditions. The results obtained in the present study are not surprising given the climatic conditions of semi-arid regions which are characterized by high winter insulation. Moreover, the experimental results show that the soil storage represents between 20 and 25% of the captured solar energy, in agreement with the conclusions of (Joliet *et al.*, 1991) who observed that the energy stored in the soil was proportional to the solar radiation contribution.

### Convective Heat Exchange at the Interface Soil Surface and the Interior Air

For the three nights of measurement, the temperature gradient values  $\Delta T_{gai}$  are rather low (±1 K), by contrast the average values of the coefficient  $h_{gai}$  are rather high (mean value 7.2 W m<sup>-2</sup> K<sup>-1</sup>). This coefficient remains negative, which means that the greenhouse ground provides heat to the interior air. Plotting the  $h_{gai}$  values of versus the temperature gradient  $\Delta T_{gai}$ , Fig. 3, shows that  $h_{gai}$  varied within a lower and an upper limit, corresponding respectively to the models proposed by (Lamrani *et al.*, 2001) ( $h_{gai} = 5.2\Delta T_{gai}^{0.33}$ ) for a greenhouse equipped with heated soil system, and by (Silva, 1988) ( $h_{gai} = 10\Delta T_{gai}^{0.33}$ ) for an unheated plastic greenhouse with bare soil. The standard deviation of  $h_{gai}$  (±1.85 W m<sup>-2</sup> K<sup>-1</sup>) may be ascribed to the experimental errors and to the models used for the determination of the radiation fluxes.

Another factor to explain this variability could be the influence of the wind velocity on the air flow inside the greenhouse. The  $h_{gai}$  variation versus the wind speed  $U_e$  (Fig. 4) is almost linear with a coefficient of determination  $R^2$  within the range [0.42-0.72].  $h_{gai}$  appears to be also a function of the wind speed even inside the greenhouse, which suggests that  $h_{gai}$  could be also governed by forced convection. For practical applications, the average value of  $h_{gai}$  ( $=7.2 \text{ W m}^{-2} \text{ K}^{-1}$ ) could be considered as a reasonable estimate in the case of an unheated greenhouse located in an area belonging to a semi arid zone.

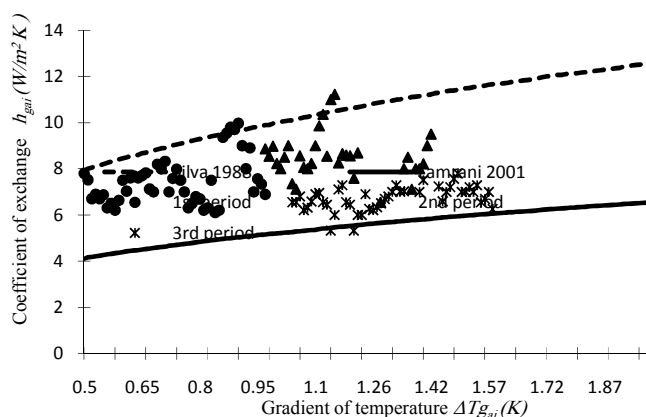


Figure 3. Convection exchange coefficient values at the surface of the soil according to the temperature gradient during the three measurement periods compared with the models of (Silva, 1988) and (Lamrani, 2001).

### Interior Air Energy Balance

Table 4 presents the average values of heat fluxes which appear in the energy balance of the interior air during the three periods of measurements. Figure 5 shows the coefficient variation  $h_{aici}$  versus the temperature gradient  $\Delta T_{aic}$  and the results of the empirical models proposed by (Tantau, 1975) cited by (Roy et al., 2002), (Kittas, 1986), and (Garzoli and Blackwell, 1987).

For the first period (January 24<sup>th</sup>) the coefficient  $h_{aici}$  approaches the value obtained from the model of Kittas (1986) ( $h_{aici} = 4.3\Delta T^{0.25}$ ) while for the two other periods (February 21<sup>st</sup> and March 18<sup>th</sup>)  $h_{aici}$  is almost similar to that deduced from the model of (Tantau, 1975) ( $h_{aici} = 1.247\Delta T^{0.33}$ ). It should be pointed out that the convective exchange coefficient  $h_{aici}$  depends on several factors, and especially on the heating system type and on the greenhouse roof slope. In the present study, all the observations lead to relatively  $h_{aici}$  low values. This may be due to the turbulence absence in our case (unheated and closed glasshouse) whereas in the work of (Kittas, 1986), who considered a greenhouse heated by hot pulsated air, relatively high values of  $h_{aici}$  were reported. (Halleux, 1989) reported similar observations from experiments carried out in a greenhouse heated by heating pipes.



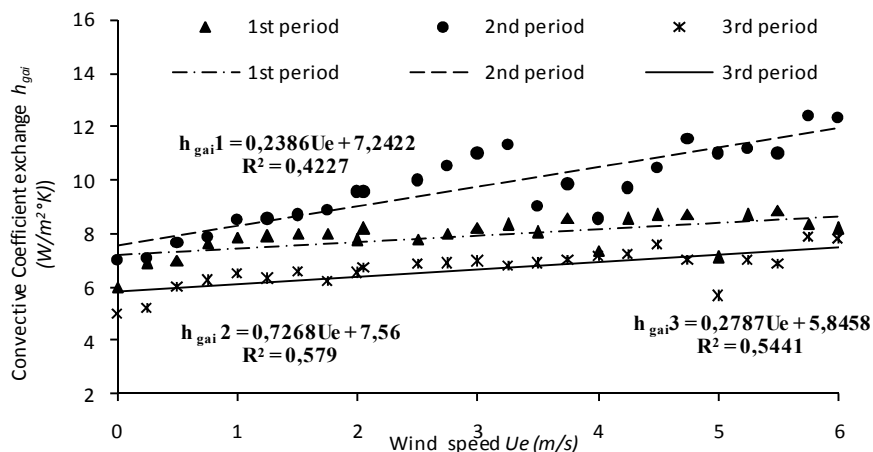


Figure 4. Convection exchange coefficient between the surface of the sheltered ground and the interior air of the greenhouse as a function of the wind speed during the three periods of measurement.

Low values of  $h_{aici}$  may thus be due to the absence of heating equipments which, if present, could enhance air movement inside the greenhouse and cause mixing and turbulence. It is well known that the air movement induced by a heating system and by the associated convection mode plays a major role in determining the convection exchange coefficient. In addition, it should be noted that positive linear correlations were found between the values of  $T_{ai}$  and  $T_{ci}$  (Fig. 6) with slopes near unity for all data sets ( $R^2 = 0.95$  for the two first periods). This implies that the heating mode in the greenhouse (i.e. heat release by the ground) causes a proportional change between the two temperatures i.e. a variation of  $T_{ci}$  practically resulted in the same variation of  $T_{ai}$ .

Table 4. Energy balance components Values of the interior air

Periods	$Q_{gai}^{cov}$ ( $Wm^{-2}$ )	$Q_{aici}^{cov}$ ( $Wm^{-2}$ )	$Q_{aiae}^{cov}$ ( $Wm^{-2}$ )	$Q_{gai}^{lat}$ ( $Wm^{-2}$ )	$Q_{aici}^{lat}$ ( $Wm^{-2}$ )	$Q_{aiae}^{lat}$ ( $Wm^{-2}$ )	$T_{ai}$ (K)	$T_{ci}$ (K)	$\Delta T_{aici}$ (K)	$h_{aici}$ ( $W m^{-2} K^{-1}$ )
Cloudy night Jan 25, 2007	6.85 ( $\pm 1.50$ )	-4.19 ( $\pm 0.2$ )	-2.66 ( $\pm 0.10$ )	9.09 ( $\pm 0.52$ )	-3.95 ( $\pm 0.15$ )	-5.14 ( $\pm 0.20$ )	283.09 ( $\pm 1.32$ )	282.35 ( $\pm 1.25$ )	-0.74 ( $\pm 0.10$ )	2.60 ( $\pm 0.23$ )
Windy night Feb 21, 2007	8.21 ( $\pm 1.85$ )	-2.93 ( $\pm 0.11$ )	-5.28 ( $\pm 0.11$ )	9.26 ( $\pm 0.47$ )	-4.62 ( $\pm 0.11$ )	-4.64 ( $\pm 0.16$ )	280.07 ( $\pm 1.56$ )	279.43 ( $\pm 1.23$ )	-0.64 ( $\pm 0.06$ )	2.10 ( $\pm 0.21$ )
Cloudless night Mar 18, 2007	6.29 ( $\pm 1.23$ )	-4.96 ( $\pm 0.16$ )	-1.33 ( $\pm 0.08$ )	9.88 ( $\pm 0.41$ )	-4.53 ( $\pm 0.13$ )	-5.35 ( $\pm 0.23$ )	278.35 ( $\pm 1.06$ )	276.10 ( $\pm 1.0$ )	-2.25 ( $\pm 0.04$ )	1.01 ( $\pm 0.06$ )

### Energy Balance on the Cover

Table 5 provides the average values of the components of the energy balance of the interior and exterior walls of the greenhouse during the three periods, together with the corresponding values of  $\Delta T_{ceae}$  and outer cover-to-air heat transfer coefficient  $h_{ceae}$ .

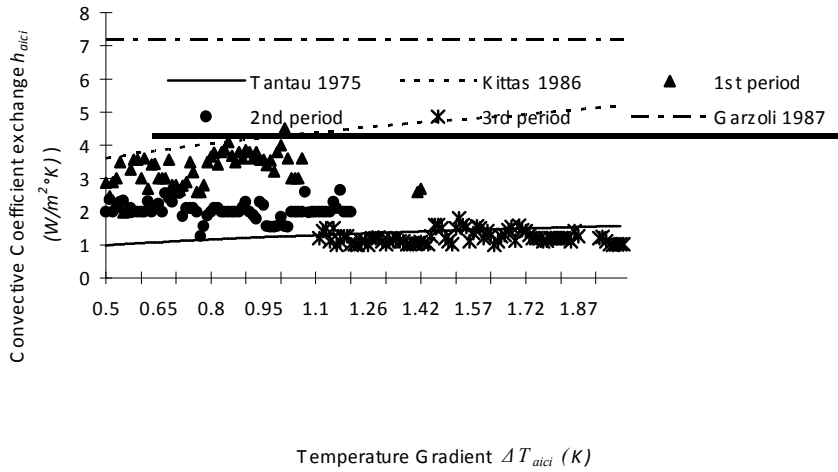


Figure 5. Convective coefficient as a function of the temperature gradient  $\Delta T_{aici}$  during the three measurement periods and comparison with the models of (Tantau, 1975), (Kittas, 1986) and (Garzoli et al.1987).

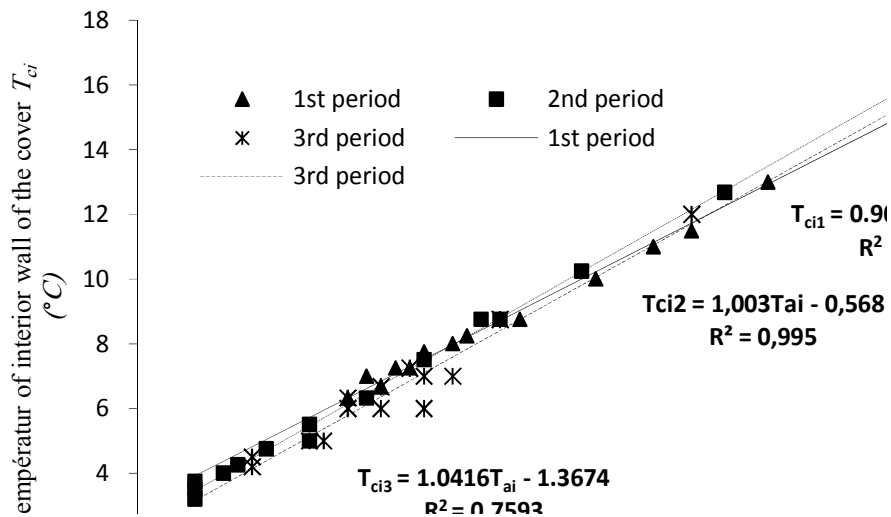


Figure 6. Temperature variations at the interior wall according to the interior air temperature  $T_{ai}$  during the three periods of measurement and the corresponding linear fit.

### Convective Exchange between the Cover and the Outside Air

The average value of the coefficient  $h_{ceae}$  is  $4.15 \pm 1.03$  ( $\text{W m}^{-2} \text{K}^{-1}$ ). For two periods (1<sup>st</sup> night and 2<sup>nd</sup> night) the coefficient  $h_{ceae}$  is in agreement with the model proposed by (Bot, 1983) ( $h_{ceae} = 2.8 + 1.2U_e$ ), but seems underestimated compared to the model of (Kittas, 1986) ( $h_{ceae} = 1.22\Delta T_{ceae}^{0.25} + 3.12U_e^{0.8}$ ). It can be ascribed in part to the convective heat exchange which is generally considered to be forced and mainly influenced by the external wind speed  $U_e$  along the outside surface of the cover. A good correlation was found ( $R^2=0.946$ ) between the variation of the coefficient  $h_{ceae}$  and the wind speed, for the three periods of measurement (Fig. 7). For the third night, the temperature gradient  $\Delta T_{ceae}$  is the highest compared to the two preceding periods. It varies between  $-1.69 \pm 0.33$  K. The corresponding heat transfer coefficient  $h_{ceae}$  has a value of  $5.47 \pm 1.70$   $\text{W m}^{-2} \text{K}^{-1}$  corresponding to a convective heat flux

$Q_{ceae}^{cov} = 20.3 \pm 4.62 \text{ W m}^{-2}$ , which is positive for the three quarters of the period (the cover was cooler than the outside air and therefore was gaining heat). This process is known as the inversion phenomenon and has been reported to occur rather frequently for unheated greenhouses during calm and cloudless nights (Montero *et al.*, 1985; Papadakis *et al.*, 1989). Under such conditions, the radiation losses through the cover are very high and the cover temperature may drop several degrees below the outside air temperature.

Table 5. Energy balance components values of the cover two walls

Periods	Interior Wall				Exterior Wall						
	$T_{ci}$ (K)	$Q_{ci}^{inf}$ (Wm <sup>-2</sup> )	$Q_{aici}^{cov}$ (Wm <sup>-2</sup> )	$Q_{aici}^{lat}$ (Wm <sup>-2</sup> )	$T_{ce}$ (K)	$T_{ae}$ (K)	$Q_{ce}^{inf}$ (Wm <sup>-2</sup> )	$Q_{cice}^{cod}$ (Wm <sup>-2</sup> )	$Q_{ceae}^{cov}$ (Wm <sup>-2</sup> )	$\Delta T_{ceae}$ (K)	$h_{ceae}$ (W m <sup>-2</sup> K <sup>-1</sup> )
<b>Cloudy night</b> Jan 25, 2007	282.35 (±1.25)	14.88 (±2.30)	4.19 (±0.20)	3.95 (±0.15)	282.28 (±2.3)	281.5 (±2.4)	-16.25 (±2.32)	23.02 (±2.38)	-6.12 (±1.23)	0.80 (±0.02)	3.60 (±1.1)
<b>Windy Night</b> Feb 21, 2007	279.43 (±1.23)	25.35 (±1.66)	2.92 (±0.11)	4.62 (±1.11)	279.33 (±2.12)	278.2 (±2.2)	-22.68 (±2.89)	32.89 (±3.51)	-10.21 (±1.63)	1.13 (±0.52)	4.15 (±1.03)
<b>Cloudless night</b> Mar 18, 2007	276.1 (±1.0)	23.34 (±2.69)	4.96 (±0.16)	4.53 (±0.13)	276.00 (±1.11)	277.49 (±1.8)	-53.11 (±4.59)	32.83 (±3.42)	+20.29 (±4.62)	-1.69 (±0.33)	5.47 (±1.7)

### Radiative Exchanges at the Cover

The interior wall receives thermal energy from the inside air by the convective and latent heat fluxes  $Q_{aic}^{cov}$  and  $Q_{aic}^{lat}$  and from the greenhouse soil by the radiative heat flux emitted by the soil surface. For the three periods of measurement, the net heat flux radiation on the interior wall  $Q_{ci}^{inf}$  was positive (Table 6) and represented the main part of the heat supply to the wall, which was twice higher than the sum of convective and latent heat fluxes. The reverse was also true for the outside wall, where a predominance of the radiation losses was clear. For the first period, the net radiation on the outside wall  $Q_{ce}^{inf}$  was negative and lower than the flux of conduction coming from the internal face. For the second period (windy night, February 21st, 2007), the same trend was observed and the net radiation  $Q_{ce}^{inf}$  still contributed to the major part of the wall energy losses.

The net radiation on the outside wall reached a high negative value  $Q_{ce}^{inf} = -53.11 \text{ W m}^{-2}$  compared with the heat gain  $Q_{cice}^{cod} = +32.38 \text{ W m}^{-2}$  and  $Q_{ceae}^{cov} = +20.29 \text{ W m}^{-2}$  especially during the night of March 19th 2007. This phenomenon frequently happens during nights with cloudless sky. For the three periods, the predominance of the outside wall radiative losses was therefore clearly established. Their intensity however decreases with the nebulosity of the sky and the period of sunset which just preceded the night period. These results are in agreement with those of (Mesmoudi et al., 2008) who reported a positive contribution of the low nebulosity of the sky on the decrease/decay of the wall radiative losses.

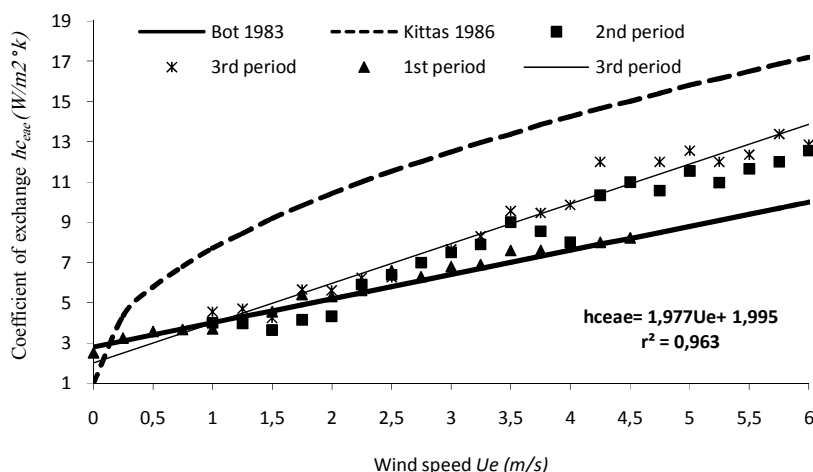


Figure 7. Heat transfer coefficient as a function of the wind speed. Comparison with the models suggested by (Bot, 1983) and (Kittas, 1986) for a fixed gradient of temperature  $\Delta T_{ceae} = 1.5K$

It is clear that the heat losses mainly include the radiation losses through the external wall surface of the cover ( $\approx 50. W m^{-2}$ ) for a cloudless night and the sensible losses along this wall ( $\approx 20.29 W m^{-2}$ ). The radiative heat exchange on the inner wall represented, the main heat supply to this wall and found to be two times higher than the sum of convective and latent heat fluxes exchanged with the interior air. Inside the greenhouse the energy exchange mainly occurred between the air and the ground. The latent losses were low and the losses by leakages were proportional to the wind velocity and temperature gradient (inside-outside). For the three periods of measurements the energy balance at the soil–air interface showed that the soil heat flux provided most of the energy to compensate for the radiative ground losses ( $\approx 44 W m^{-2}$ ,  $\approx 42 W m^{-2}$ ,  $\approx 38 W m^{-2}$ ). In the greenhouse air volume, energy losses mainly occurred through air-inner wall of the cover convective and latent exchange ( $\approx 8.14 W m^{-2}$ ,  $\approx 5.52 W m^{-2}$ ,  $\approx 9.49 W m^{-2}$ ). At the outer wall of the cover, losses mostly occurred by radiative exchange ( $\approx 16.25 W m^{-2}$ ,  $\approx 22.68 W m^{-2}$ ,  $\approx 53.11 W m^{-2}$ ).

## CONCLUSIONS

The present study, based on experiments conducted in Batna Algeria, provides a methodology to analyse the thermal behaviour of greenhouses installed in areas characterized by semi arid climate of the southern Mediterranean basin. Moreover, this work can be regarded as a useful contribution to the comprehension of the energy balance of the unheated greenhouses. Concerning these aspects, the following results could be pointed out:

1. The greenhouse soil is an important heat source during the night time. It can provide up to approximately ( $44.03 W m^{-2}$ ) in the case of a night preceded by a significant diurnal insulation. Compared with an artificial heating system, approximately  $78 W m^{-2}$ , would be necessary under similar outside climatic conditions to maintain the temperature of the air inside the greenhouse between  $15^{\circ}C$  and  $18^{\circ}C$ .
2. The estimation of convection exchange coefficients between the components of the greenhouse are in agreement with the models reported in the literature. The convection mode

inside the greenhouse induced by the type of heating system seems to play a significant role in the determination of the convective exchange coefficient.

3. The radiation losses are the main component of the greenhouse energy losses, mainly for the cover outside wall. This phenomenon is enhanced when the sky is relatively clear (low nebulosity).

Concerning the feasibility of building greenhouses and their extension in the area, the following conclusions may be drawn: i) since the process of thermal exchanges is dominated by the dissipation of heat through the cover, the implementation of heat shields, or the use of covers (plastic, glass) with a low thermal emissivity could generate substantial economies; ii) the losses by leakage could be overcome by increasing the air tightness of the structure of the greenhouse; iii) the ground of the greenhouse is a significant source of heat in Mediterranean countries which could be extracted and stored for other applications. This solution could increase significantly the thermal efficiency of the greenhouses in the strongly sunny areas.

## REFERENCES

1. Aubinet, M. (1994) Long wave sky radiation parameterizations, *Solar energy*, 53: 147-154.
2. Baille, A., Aries, F., Baille, M. (1985) Influence of thermal screen optical properties on heat losses and microclimate of greenhouses, *Acta Horticulturae*, 174: 111-118.
3. Baille, A., Lopez, J.C., Bonachela, S., Gonzalez-Real, M.M., Montero, J.I. (2006). Night energy balance in a heated low-cost plastic greenhouse, *Agricultural and Forest Meteorology*, 137: 107-118.
4. Baptista, F.J. (1999). Greenhouse ventilation rate: theory and measurements with tracer gase techniques, *Agricultural Engineering Research*, 72: 363-374.
5. Boulard, T., Baille, A. (1986). Simulation and analysis of soil heat storage systems for a solar greenhouse II. *Energy in agriculture*, 5: 285-293.
6. Boulard, T., Roy, J.C., Jaffrin, A. (2001), Air flows and temperature patterns induced in a confined greenhouse, *Agricultural Engineering Research*, 78 (1): 75-88.
7. Bot, G.P.A. (1983). Greenhouse climate: From physical processes to a dynamic model. PhD thesis. Wageningen Agricultural University, Netherlands.
8. Businger, J.A. (1963) The glasshouse climate, *Physics of plants Environment*, North Holland Publishing Co., Amsterdam, 277-318.
9. Capderou, M. (1985) Atlas Solaire d'Algérie, *Office des publications universitaires d'Algérie*, Alger.
10. Halleux, D. (1989) Dynamic model of heat and mass transfer in greenhouses: theoretical and experimental study. Ph.D Thesis, Gembloux University, Belgium.
11. Fernandez, J. E., Bailey, B.J. (1992) Measurements and prediction of greenhouse ventilation rates. *Agricultural and Forest Meteorology*. 58: 229-245.
12. Garzoli, K., Blackwell, J. (1987) An analysis of the nocturnal heat loss from a double skin plastic greenhouse. *Agricultural Engineering Research*, 36: 75-85.
13. Gauthier, C., Lacroix, M., Bernier, H. (1997) Numerical simulation of soil heat exchanger-storage systems for greenhouse, *Solar Energy*, 60 (6): 333-346.
14. Guyot, G. (1999) *Climatologie de l'environnement*, Edition Dunod, Paris. France.
15. Hill, J.M. (2006) Dynamic modeling of tree growth and energy use in a nursery greenhouse using Matlab and Simulink, Master thesis, Cornell University, UK.
16. Impron, I., Hemming, S., Bot, G.P.A. (2007) Simple greenhouse climate model as a design tool for greenhouse in tropical lowland, *Biosystems Engineering*, 98: 79-89.

17. Joliet, O. (1991) HRTICERN: An improved static model for predicting the energy consumption of a greenhouse, *Agricultural and Forest Meteorology*, 55: 265-294.
18. Kimbal, B.A. (1973) Simulation of the energy balance of a greenhouse, *Agricultural Meteorology*, 11: 243-260.
19. Kittas, C. (1986) Greenhouse cover conductance, *Boundary Layer Meteorology*, 36: 213-225.
20. Lamrani, M.A., Boulard, T., Roy, J.C., Jaffrin, A. (2001) Air flows and temperature patterns induced in a confined greenhouse, *Agricultural Engineering Research*, 78 (1): 75-88.
21. Mesmoudi, K. Adjroudi, R. Soudani, A. Bougoul, S. (2007) Etude de la distribution de la température de l'air à l'intérieur d'une serre en plastique sans couvert végétal dans la région des Aurès, Etude Expérimentale. ICRESO\_07, Congrès international sur les énergies renouvelables et le développement durable. May 21-24th 2007. Tlemcen. Algeria.
22. Mesmoudi, K., Soudani, A., Serir, L. (2008) Modèle de bilan énergétique d'une serre en verre sans couvert végétal, *Revue des énergies renouvelables*, 11(1): 51-64.
23. Molina-Aiz, F.D., Valera, D.L., Alvares, A.J. (2004) Measurement and simulation of climate inside Almeria-type greenhouse using computational fluid dynamics, *Agricultural and Forest Meteorology*, 125: 33-51
24. Montero, J.I., Castilla, N. Gutiérrez de Ravé, E., Bretones, F. (1985) Climate under plastic in the Almeria area, *Acta Horticulture*, 170: 227-234.
25. NASA (2005) Saturation Vapor Pressure. National Aeronautics and Space Administration (NASA), Washington, D.C., USA.  
[http://atmos.nmsu.edu/education\\_and\\_outreach/encyclopedia/](http://atmos.nmsu.edu/education_and_outreach/encyclopedia/).
26. Nijskens, J. Deltour, J. Coutisse, S. Nisen, A. (1984) Heat transfer through covering materials of greenhouses, *Agricultural and Forest Meteorology*, 33: 193-214.
27. Papadakis, G., Frangoudakis, S., Kyritsis, S. (1992). Mixed, forced and free convection heat transfer at the greenhouse cover, *Agricultural engineering research*, 51:191-205.
28. Roy, J.C. Boulard, T., Kittas, C., Wang, S. (2002) Convective and ventilation transfers in greenhouse. Part I, *Biosystems Engineering*, 83:1-20.
29. Silva, A.M. (1988). A contribution to the study of the greenhouse climate, analysis of some processes of energy transfer. PhD thesis. University of Evora, Portugal.
30. Stanghellini, C., de Jong, T. (1995) A model of humidity and its applications in a greenhouse. *Agricultural and Forest Meteorology*, 76: 129-148.
31. Singh, G., Singh, P.P., Lubana, P.P.S., Singh, K.G. (2006) Formulation and validation of mathematical model of microclimate in a greenhouse, *Renewable Energy*, 31:1541-1560.
32. Tantau, H. J. (1975) Effects of single and double covering on climate and heat management in greenhouses. PhD Thesis. Fak. Gartenau und Landeskerutur. Tech.Univ. Hannover, Germany
33. Walker, J.N. (1965) Predicting temperatures in ventilated greenhouse, *Trans. Am. Soc. Agric. Eng.*, 8: 445-448
34. Wang, S., Boulard, T. (2000) Predicting the microclimate in naturally ventilated plastic house in Mediterranean climate, *Agricultural Engineering Research*, 75:27-38.
35. Zhang, S. Mahrer, Y. Margolin, M. (1997) Predicting the microclimate inside a greenhouse: an application of a one-dimensional numerical model in an unheated greenhouse, *Agricultural and Forest Meteorology*, 86: 291-297.

## دراسة تجريبية لتوازن الطاقة في بيت زجاجي غير مسخن اصطناعياً في طقس صحراوي حار : دراسة أعدت أثناء ليالي فصل الشتاء

<sup>a</sup> مسمودي كمال، <sup>b</sup> سوداني عز الدين، <sup>a</sup> زيتوني بريزة، <sup>c</sup> ب. أ. بورني، <sup>d</sup> سرير لزهر

<sup>a</sup> قسم الزراعة، كلية العلوم، جامعة باتنة، باتنة، الجزائر

<sup>b</sup> قسم الفيزياء، كلية العلوم، جامعة باتنة، باتنة، الجزائر

<sup>c</sup> وحدة البحث في فيزياء المحيط و البستنة، المركز الغربي 2 شارع لونيوت 49045 انجي. فرنسا

<sup>d</sup> وحدة البحث المطبقة في الطاقات المتجددة. غرداية. الجزائر

### الملخص

في المناطق ذات المناخ الساخن والجاف، مثل دول جنوب حوض المتوسط، من الضروري فهم وحساب كل التحولات والانتقالات الحرارية بين مكونات البيوت الزجاجية (الأرض المغطاة، جدران وسقف البيت) خاصة أثناء الفترة الليلية من فصل الشتاء. لهذه الغرض تمت هذه الدراسة التجريبية في بيت زجاجي مجرد من الغطاء النباتي ومن أي تسخين اصطناعي. البيت الزجاجي متواجد في منطقة من الهضاب العليا الجزائرية (باتنة). أجريت ثلاث أنواع من التجارب لهذا البيت الزجاجي خلال المدة الممتدة من يناير إلى مارس من عام 2008. شملت التجربة الأولى الفترة المتميزة بليالي ذات سماء مغطاة بالسحب، وشملت التجربة الثانية الفترة المتميزة بليالي مضطربة (رياح)، وخصصت الدراسة الأخيرة للفترة المتميزة بليالي ذات سماء صافية.

بينت نتائج الدراسة أن الأرض المغطاة بالبيت الزجاجي تمثل مخزناً للطاقة الحرارية خاصة أثناء الليالي التي سبقتها فترات نهائية مشمسة. باستطاعة هذه الطاقة المخزنة تغطية الطاقة الضائعة من جدران البيت الزجاجي. من جهة أخرى بينت الدراسة أن جل الطاقة الحرارية الضائعة من البيت الزجاجي هي عبارة عن انتقال حراري بين الوجه الخارجي للغطاء الزجاجي والمحيط الخارجي للبيت.

خصص جزء من هذه التجربة لدراسة عوامل الانتقال الحراري داخل البيت الزجاجي وخارجه، كما تمت مقارنة العوامل التي تم الحصول عليها مع بعض الدراسات التي أجريت في مناطق مختلفة من العالم، وكانت المقارنة متفقة مع نتائج الدراسات في مناطق أخرى من العالم. و بعد التحليل العلمي لدراستنا حول التحولات والانتقال الحراري داخل البيوت الزجاجية المتواجدة في المناطق الجافة في جنوب حوض البحر الأبيض المتوسط يمكننا القول أن الأرض المغطاة بالبيت الزجاجي يمكن أن تلعب دوراً في خزن الطاقة الحرارية أثناء الليل.